



Upstream process development

Upstream process development at Glycotope offers biotechnological contract research and development based on mammalian cell culture systems with a special expertise on perfusion cultivation technologies.

Beside development in customers' own cell lines, we offer the GlycoExpress® (GEX®) technology, a well-established human expression platform for the screening and production of biotherapeutics.

Our core competencies

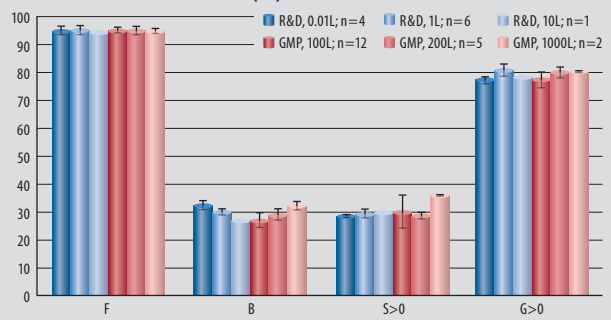
- Screening of glycosylation variants produced in different GEX® cells
- Cell line development in customers' own cell line or in GEX® cells
- Clone screening and process optimization in microscale bioreactors in batch, fed-batch or perfusion mode
- Upstream process development at 1-10 L scale for batch, fed-batch or perfusion (Xcell™ ATF or Centritech®) operation
- Track record of successful process development for mAbs (including defucosylated Abs), antibody constructs, hormones, blood factors and other glycooptimized or difficult-to-express proteins
- High yield expression combined with high reproducibility and scalability

Yields for different product classes (R&D)

| Product Class | Productivity* |
|--------------------------------|---------------|
| IgG (high and low core-fucose) | 15-30 g/L |
| IgA | 10-15 g/L |
| IgM | ~3 g/L |
| Factor VII | ~2 g/L |

*Yield per 30-40 day perfusion run per liter bioreactor volume

relative molar abundance (%)



Glycan profile across scales for an IgG1 antibody produced in GEX® cells (F: fucosylated, B: bisected, S: sialylated, G: galactosylated structures)

ISO 9001 compliant production of proteins

We offer ISO 9001 compliant production processes to ensure controlled quality of biopharmaceutical proteins.

For more information please contact us

Dr. Lars Stöckl

Glycotope GmbH
www.glycotope.com

Robert-Roessle-Str. 10
13125 Berlin · Germany

Phone: +49 30 9489-2600
E-mail: service@glycotope.com