

Diagnostics

BASOTEST

MIGRATEST

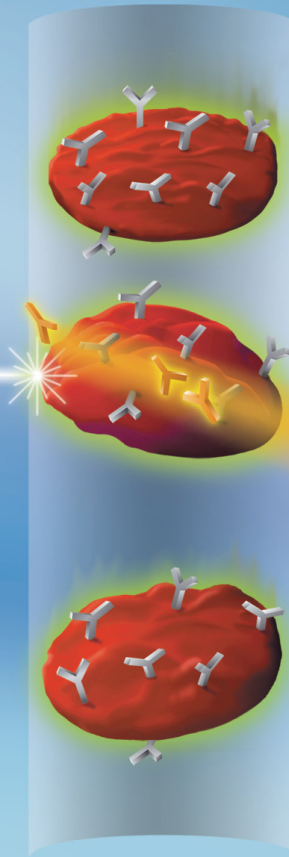
PHAGOTEST

PHAGOBURST

NKTEST

THROMBOCYTEST immune

THROMBOCYTEST plus



THROMBOCYTESTTM immune

Reagent Kit for the Quantitation of Platelet Associated Immunoglobulin

Simple | Fast | Sensitive | Standardized Test Procedure | Complete Evaluation by Flow Cytometry

Simple and sensitive method for the flow cytometric quantitation of platelet associated immunoglobulin.

Reagent kit contains various polyclonal antibodies labelled with the fluorescence dye phycoerythrin (PE): antibodies against total human immunoglobulins, against human IgA, IgM and IgG and against rabbit immunoglobulin as a negative control. The kit also contains anti-CD42a-FITC and further reagents.

Standardized test procedure for the evaluation of thrombocytopenia (low platelet count). The determination of autoantibodies helps to differentiate immune from nonimmune thrombocytopenia.

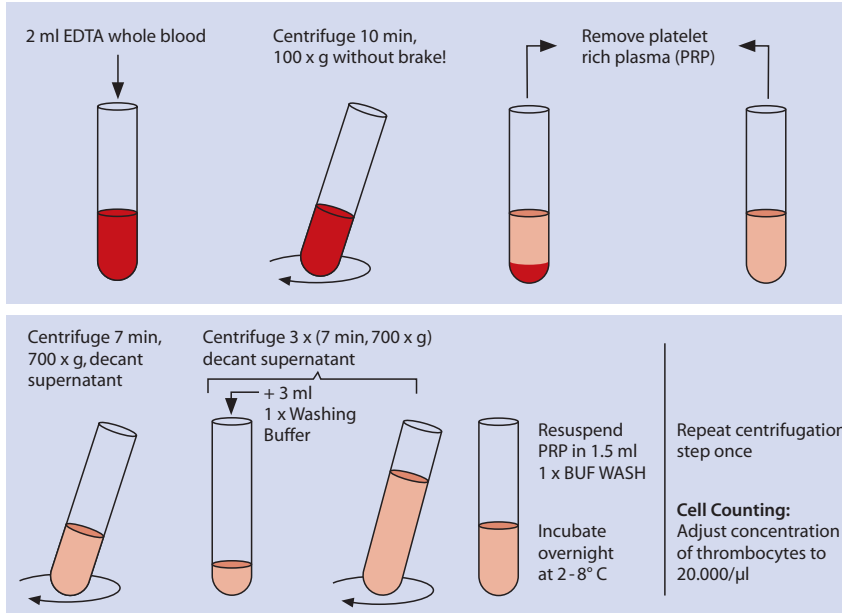
Quantitative analysis of platelet associated total immunoglobulin for the differential diagnosis of Idiopathic Thrombocytopenic Purpura (Morbus Werlhof, ITP).

THROMBOCYTESTTM immune

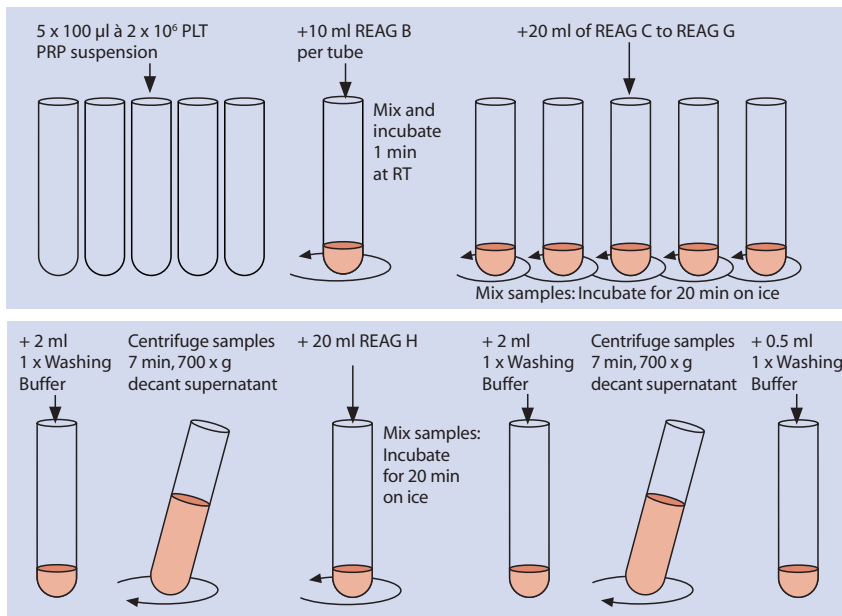
Flow Cytometric Quantitation of Platelet Associated Immunoglobulin

A. Sample Preparation

A. Isolation of platelet rich plasma (PRP)



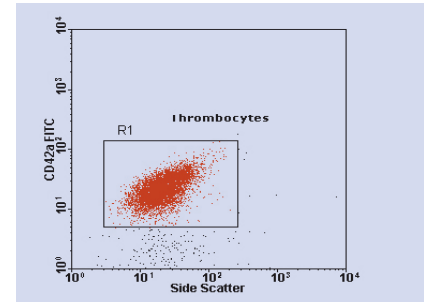
2. Cell Labelling



BUF WASH = Washing Buffer REAG C to REAG G = different polyclonal antibodies
 REAG B = Goat Serum REAG H = CD42a-FITC

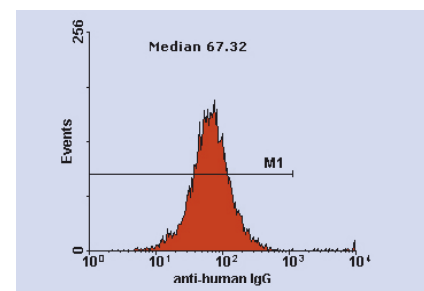
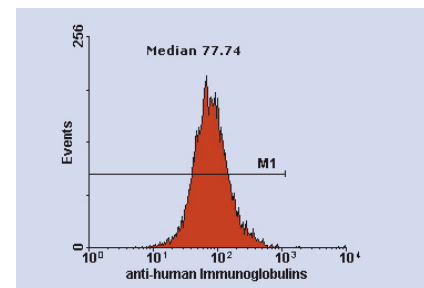
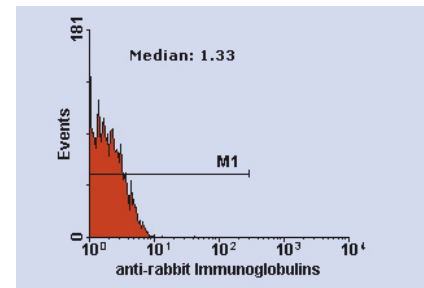
B. Measurement

Set FSC and SSC amplifier gains to log mode. Region 1 set on CD42a positive thrombocytes.



C. Data Evaluation

Region 1 is set on CD42a positive thrombocytes. Display FL2 histograms and analyse the Median values. Examples from patient positive for IgG.



For more information please contact us

Dr. Werner Hirt

Head of Diagnostics / Immunology

Phone: + 49 6221 9105-0

e-mail: w.hirt@glycotope-bt.com

Glycotope Biotechnology GmbH | Czernyring 22 | D-69115 Heidelberg
 Germany | www.glycotope-bt.com