

## Diagnostics

BASOTEST

MIGRATEST

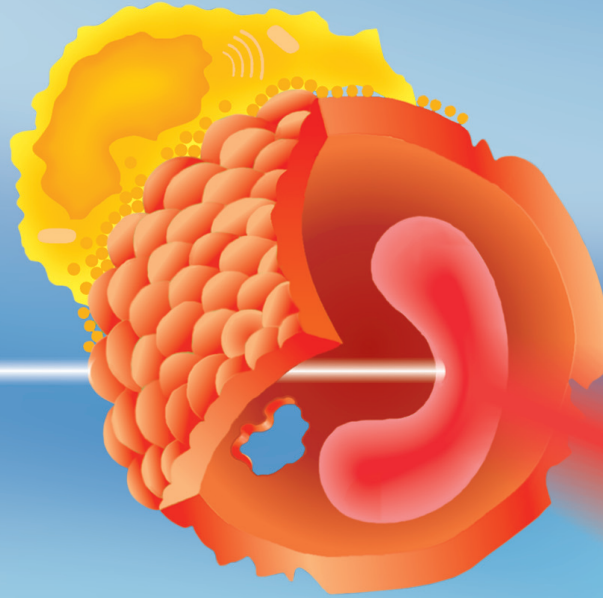
PHAGOTEST

PHAGOBURST

**NKTEST**

THROMBOCYTEST immune

THROMBOCYTEST plus



# NKTEST<sup>TM</sup>

## Reagent Kit for the Quantitative Determination of the Cytotoxic Activity of Natural Killer (NK) Cells

**Simple | Fast | Sensitive | Standardized Test Procedure | Complete | CE Certified  
Evaluation by Flow Cytometry**

Simple and sensitive method for the routine clinical assessment of NK lytic activity.

Reagent kit contains cryopreserved K562 target cells, complete medium and staining reagents.

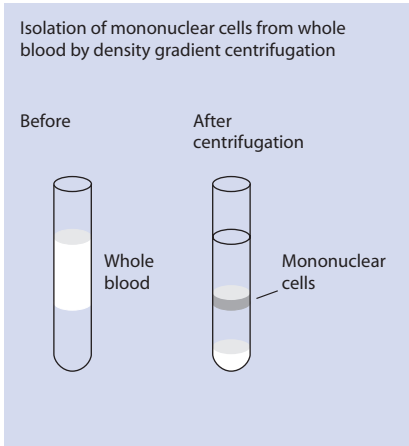
Avoidance of radioisotope usage and reduction of overall assay time. Easy discrimination between effector and target cells.

**Quantitative Determination of the cytotoxic activity of natural killer (NK) cells.**

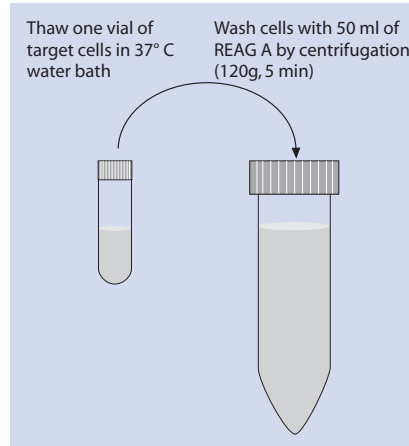
# NKTEST™ Handling

## A. Sample Preparation

### 1. Isolation of Effector Cells

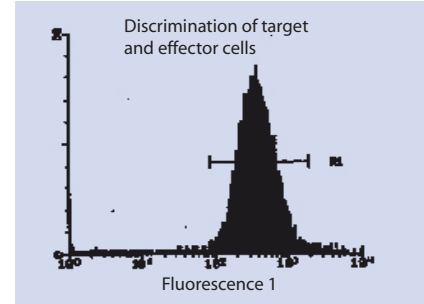


### 2. Thawing of Target Cells

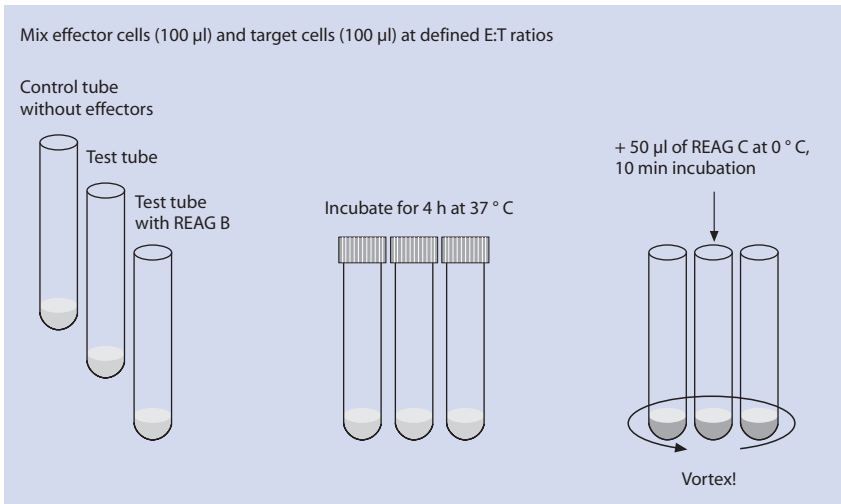


## B. Measurement

Set a live gate on green fluorescent target cells during acquisition



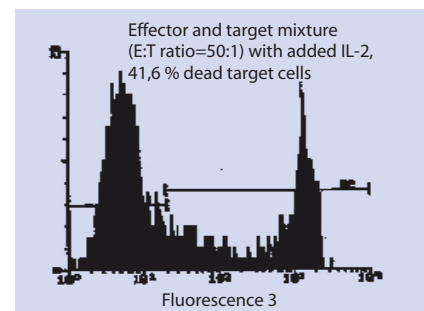
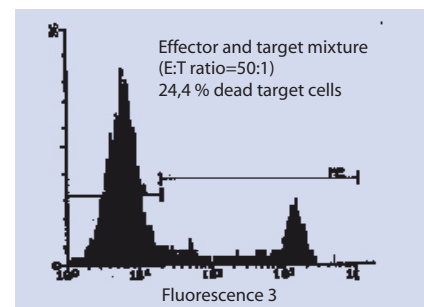
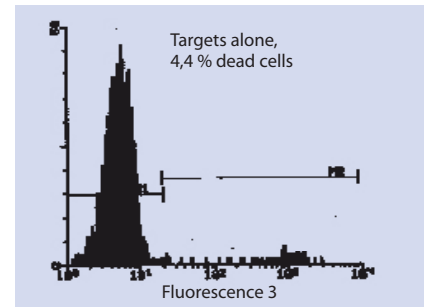
### 3. NK Functional Test



REAG A = Complete Medium  
REAG B = Interleukin-2  
REAG C = DNA Staining Solution

## C. Data Evaluation

Determine the percentage of dead target cells (= fluorescence 3 positive events)



**Report your results**

For more information please contact us

**Dr. Werner Hirt**

Head of Diagnostics / Immunology

Phone: + 49 6221 9105-0

e-mail: w.hirt@glycotope-bt.com

Glycotope Biotechnology GmbH | Czernyring 22 | D-69115 Heidelberg  
Germany | www.glycotope-bt.com