

Diagnostics

BASOTEST

MIGRATEST

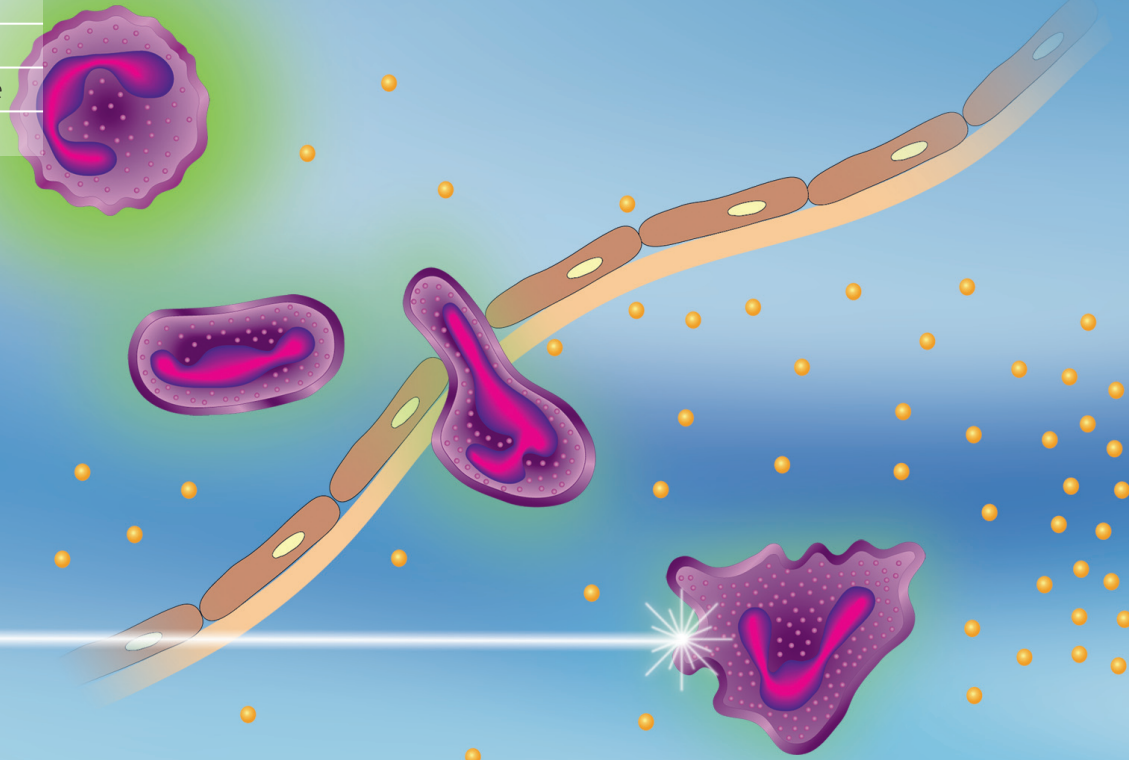
PHAGOTEST

PHAGOBURST

NKTEST

THROMBOCYTEST immune

THROMBOCYTEST plus



MIGRATESTTM

CHEMOTAXIS

Reagent Kit for the Quantitative Determination of the Chemotaxis of Neutrophilic Granulocytes

Simple | Fast | Standardized Test Procedure | Complete | CE Certified
Evaluation by Flow Cytometry

Simple and sensitive method for the flow cytometric determination of the chemotactic function of neutrophilic granulocytes.

Reagent Kit contains multiwell plates and precoated cell culture inserts for chemotaxis studies, the chemotactic

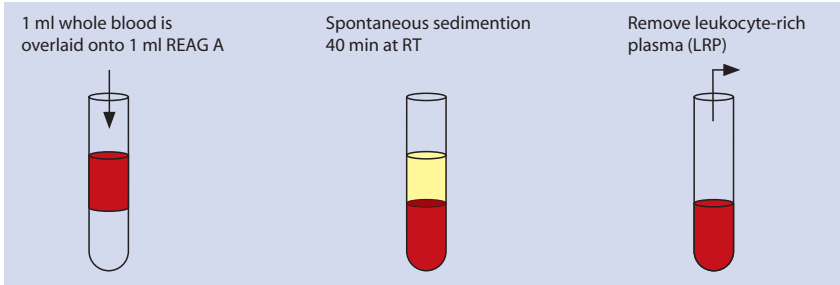
peptide N-formyl-Met-Leu-Phe (fMLP), an antibody reagent, counting beads and necessary reagents.

Quantitative determination of the chemotactic function of neutrophilic granulocytes.

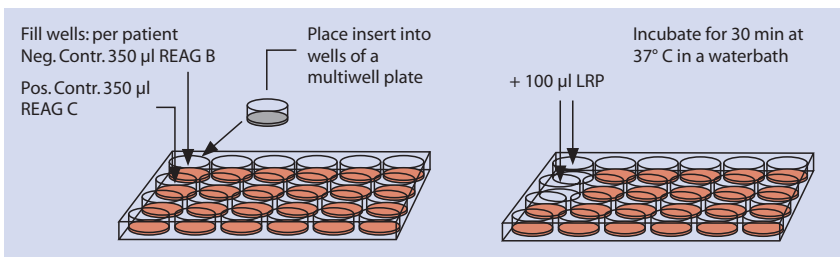
MIGRATEST™ Handling
CHEMOTAXIS

A. Sample Preparation

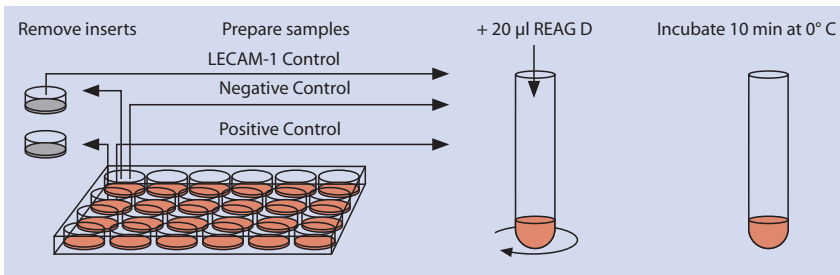
1. Leukocyte Isolation



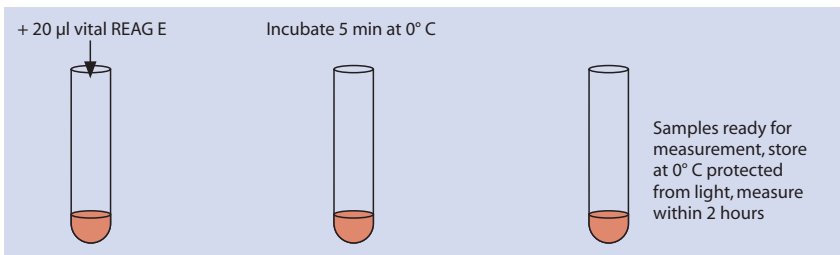
2. Stimulation and Chemotaxis



3. Cell Labelling



4. DNA Staining, Measurement

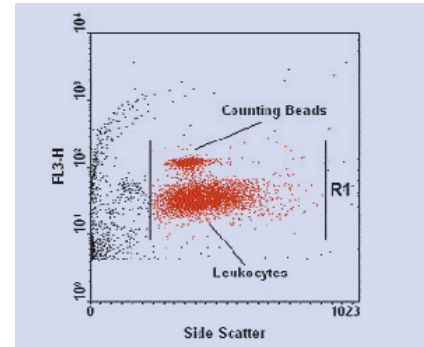


REAG A = separation medium
REAG B = incubation buffer
REAG C = fMLP

REAG D = antibody and counting reagent
REAG E = vital DNA staining solution

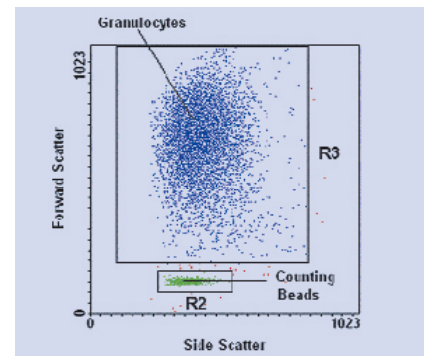
B. Measurement

Acquire data by using fluorescence triggering in the FL3 channel. Region 1 set on leukocytes and counting beads

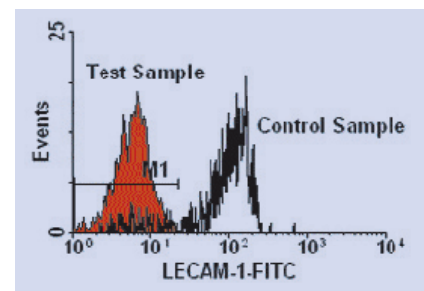


C. Data Evaluation

Region 2 is set on counting beads during data acquisition. Set a logical gate on granulocytes in region 1 and region 3 and analyse the number of cells and the Mean value of the FSC signal for the population of granulocytes.



Determine the percentage of activated neutrophils showing a decreased expression of the cell adhesion molecule LECAM-1 (separate FL1 histogram).



For more information please contact us

Dr. Werner Hirt

Head of Diagnostics / Immunology

Phone: + 49 6221 9105-0

e-mail: w.hirt@glycotope-bt.com

Glycotope Biotechnology GmbH | Czernyring 22 | D-69115 Heidelberg
Germany | www.glycotope-bt.com