

Diagnostics

BASOTEST

MIGRATEST

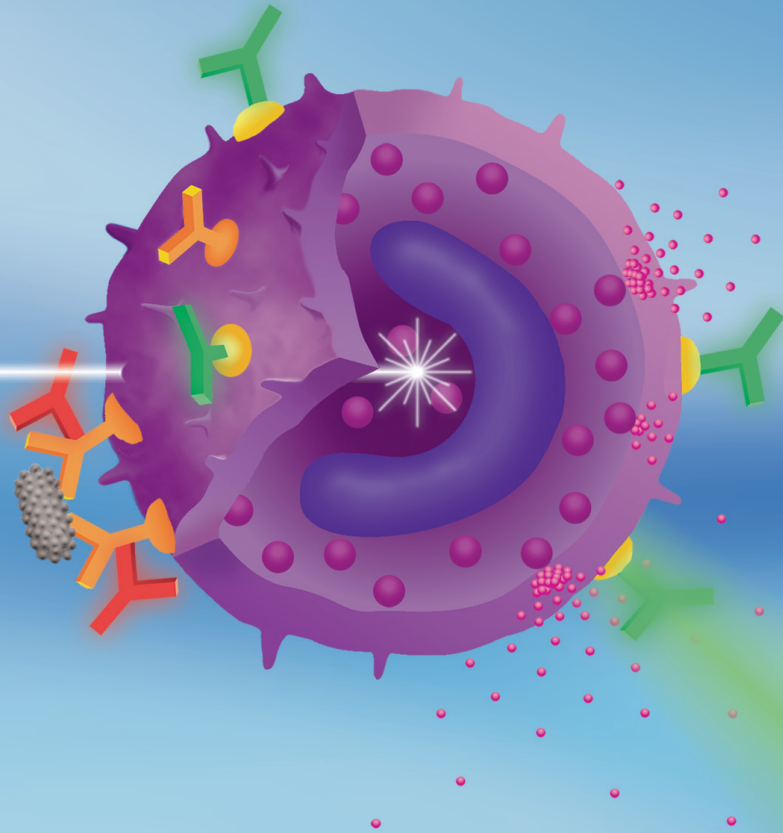
PHAGOTEST

PHAGOBURST

NKTEST

THROMBOCYTEST immune

THROMBOCYTEST plus



BASOTEST™

Reagent Kit for the Determination of Allergen Induced Basophil Degranulation

**Simple | Fast | Sensitive | Standardized Test Procedure | Complete | CE Certified
Evaluation by Flow Cytometry**

Simple and sensitive method for the flow cytometric determination of basophil degranulation in heparinized whole blood.

Reagent kit contains the chemotactic peptide N-formyl-Met-Leu-Phe (fMLP) as positive control, important allergens, a two-colour antibody reagent for detection of human basophilic granulocytes and determination of basophil activation and necessary reagents.

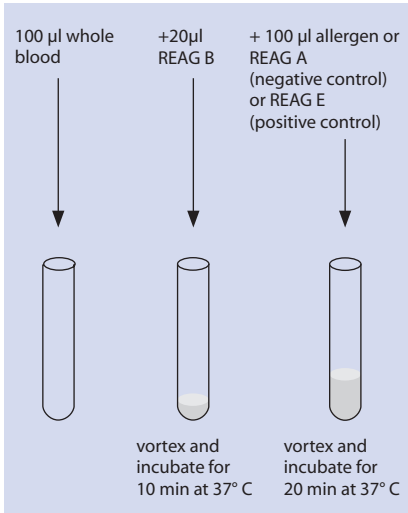
Standardized test procedure for detecting immediate-type hypersensitivity, testing of natural allergens and checking the success of immunotherapy (e.g. hypo-sensitisation). Good correlation with histamine release assay.

Quantitative analysis of basophil degranulation in 100 µl of whole blood under optimal conditions without disturbance by isolation procedures.

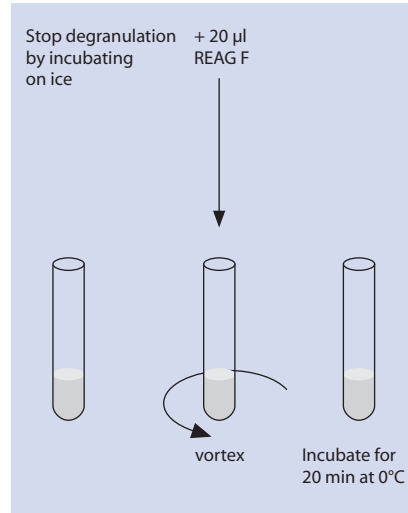
BASOTEST[™] Handling

A. Sample Preparation

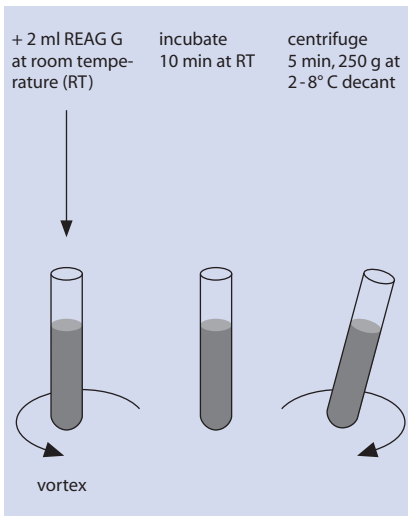
1. Degranulation



2. Labelling

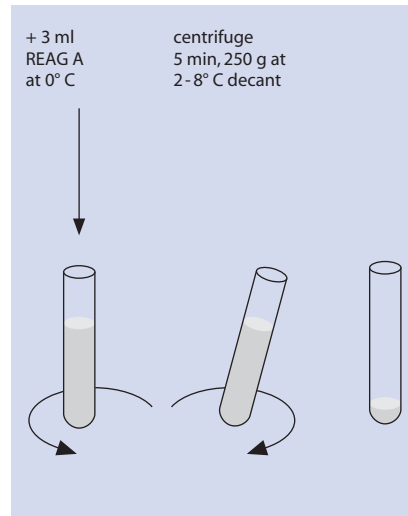


3. Lysing and Fixation



REAG A = wash solution
REAG B = stimulation buffer
REAG E = fMLP

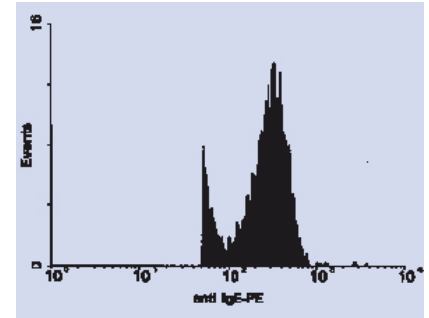
4. Washing



REAG F = staining reagent
REAG G = lysing solution

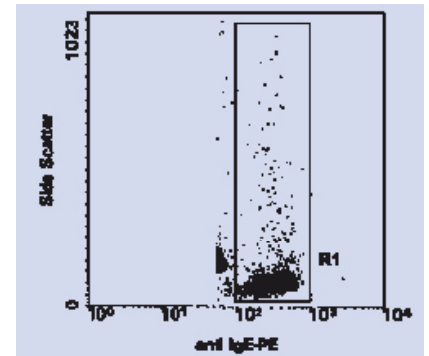
B. Measurement

Acquire data by setting the trigger threshold on fluorescence 2.



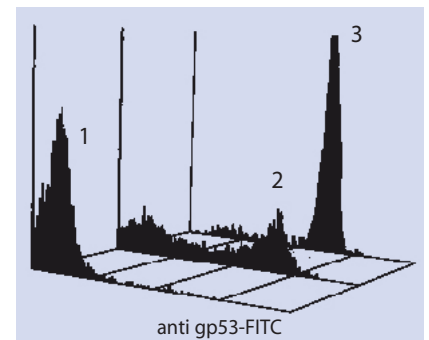
C. Data Evaluation

Gate on basophils expressing high amounts of IgE during data analysis (log FL2/in SSC)



Determine the percentage of activated basophilic granulocytes (gp 53 positive) cells

- 1 Unstimulated control
- 2 Stimulation with fMLP
- 3 Stimulation with grass pollen mixture



Report your results

For more information please contact us

Dr. Werner Hirt

Head of Diagnostics / Immunology

Phone: + 49 6221 9105-0

e-mail: w.hirt@glycotope-bt.com

Glycotope Biotechnology GmbH | Czernyring 22 | D-69115 Heidelberg
Germany | www.glycotope-bt.com